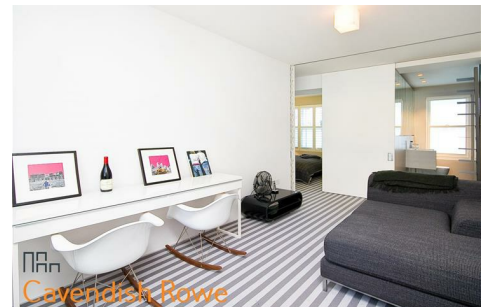
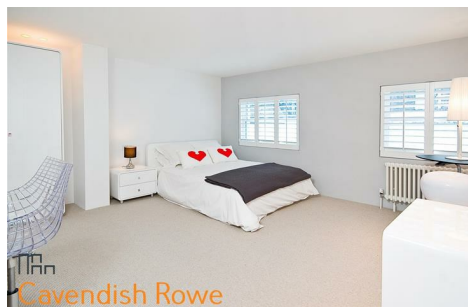


Chilworth Mews, W2 3RG

£1,000 Per Week

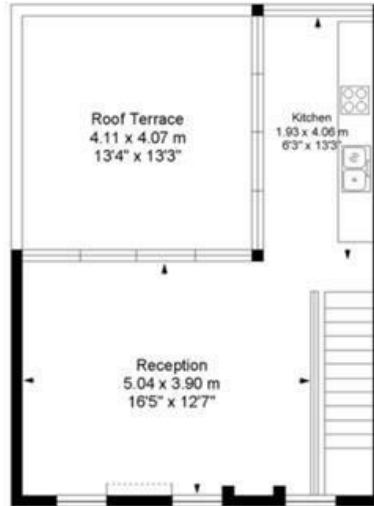


SOLE AGENT. An architecturally designed 1434 sq ft mews house in the heart of W2. The property is laid out over three floors and boasts a huge decked roof garden and garage. An ultra-modern reception room with floor to ceiling glass sliding doors affording an abundance of natural light leads directly on to the outside space. Modern kitchen with integrated appliances, three double bedrooms one with en-suite wet room, full bathroom and additional office/snug room. Ideally situated for easy access to the City and Heathrow Airport via the Heathrow Express (Paddington Station). Other benefits of the area include the vast open space of Hyde Park and Kensington Gardens and the fantastic shopping facilities of Oxford Street. Available now, UNFURNISHED. Call today to arrange a viewing!

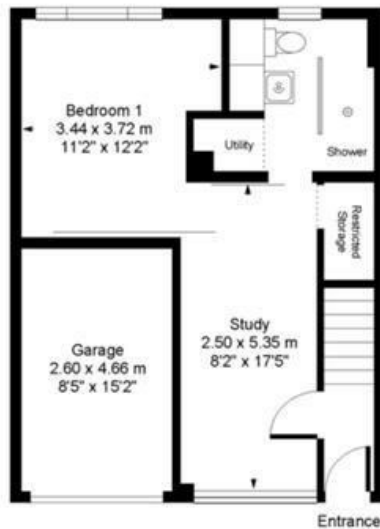
Chilworth Mews W2



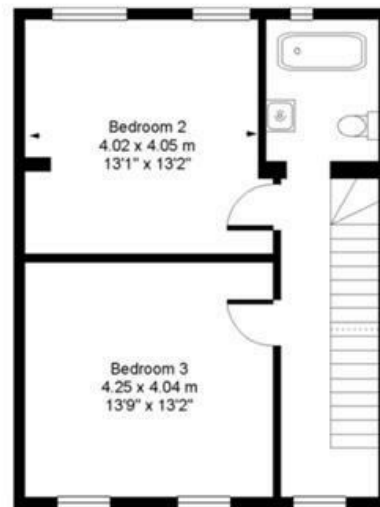
Approx. Gross Floor Area = 133 sq.meters • 1434 sq.feet



SECOND FLOOR



GROUND FLOOR



FIRST FLOOR

For illustrative purposes only. Not to scale. Prepared by Swan Photography 01435 863908

Energy Efficiency Rating		
	Current	Potential
Very energy efficient - lower running costs		
(92 plus) A		81
(81-91) B		
(69-80) C		
(55-68) D	66	
(39-54) E		
(21-38) F		
(1-20) G		
Not energy efficient - higher running costs		
England & Wales		EU Directive 2002/91/EC.

Environmental Impact (CO ₂) Rating		
	Current	Potential
Very environmentally friendly - lower CO ₂ emissions		
(92 plus) A		
(81-91) B		
(69-80) C		
(55-68) D		
(39-54) E		
(21-38) F		
(1-20) G		
Not environmentally friendly - higher CO ₂ emissions		
England & Wales		EU Directive 2002/91/EC